

# OmniTerm/W180

## Windows Based Thin Client Simple and flexible



- Compatible with Windows 2003, Windows 2000, Windows XP Pro, Citrix Metaframe, Metaframe XP, MetaFrame for UNIX and Citrix Presentation Server.
- Latest ICA and RDP clients to access your windows applications and VDI access.
- VDI access with Provision Networks Remote Desktop broker. Dunes broker compatible.
- TermPro built-in terminal emulator to access your AS/400, Mainframe and UNIX applications.
- OmniKey 122-key keyboard or standard 105-key keyboards.
- Internet Explorer 6.0 for Windows CE.
- Administration, Configuration, Asset Management and Remote Control with ORCA management software.
- PC/SC format smart card reader (S model).
- WiFi 802.11b/g OmniLink adapter\*.

\* Options

More powerful than OmniTerm/W160, OmniTerm/W180 combines the security of the legacy terminals and the power of Windows, IBM and UNIX servers to deliver to the Enterprise a performing economical and secure solution.

### Universality and flexibility

OmniTerm/W180's built-in Microsoft RDP and Citrix ICA clients provide seamless and secure access to your applications residing on Windows and Citrix servers as well as VDI access.

VDI access is also available through the built-in Remote Desktop broker from Provision Networks.

The **TermPro** terminal emulations suite, emulates 5250 and 3270 terminals and system printers and gives full access to the IBM AS/400 and Mainframe servers.

**TermPro** also emulates a variety of ASCII terminals for connection to the UNIX/LINUX and IBM (ASCII) environments.

All connections can be established simultaneously to different types of hosts.

Additionally, OmniTerm/W180 offers more peripheral support than any other Thin Clients including a parallel port, 4 USB ports, two serial ports and two PS2 ports.

OmniTerm/W180 gives you the choice between Ethernet 10/100 Mbps and **WiFi 802.11b/g** (optional) to connect to your network.

### Internet access

OmniTerm/W180 integrates Internet Explorer to deliver secure access to the Internet.

### Security

Various configuration options let you lock down OmniTerm/W180, completely securing it from unauthorized configuration changes. You can select the most appropriate level of protection you need.

Also, OmniTerm/W180s secure functions let you define several user profiles with different authorization levels and automatic session start up.

With no local storage devices and our unique read-only file system your data are protected from viruses and malevolent use.

### Control and administration

"OmniTerm Remote Control and Administration" (ORCA) is an easy and powerful SNMP based administration software that let remotely manage and configure all OmniTerm thin clients attached to your network and sub networks.

ORCA also automatically maintains an asset management database and features a remote control module.

### Productivity add-ons

Use the NetClock SNTP client to synchronize OmniTerm/W180 with an atomic clock an finely manage your DHCP leases.

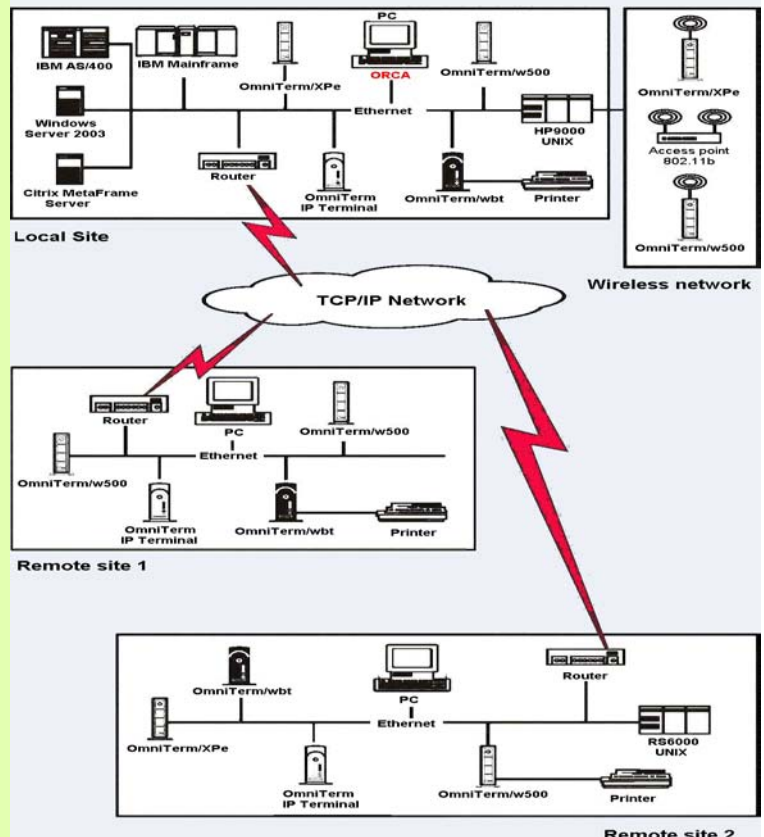
Use the locally attached printer as a network printer thanks to NetLPD the built-in LPD server.

Let a server application take control over the OmniTerm/W180 serial ports thanks to NetCom, our serial proxy.

Use a 3M Touch Systems, Elo or eGalax touch screen, a MagTek magnetic stripe reader, or a smart card reader \* thanks to our integrated drivers.

External USB OmniLink WiFi 802.11b/g adapter optional.

\* OmniTerm/W180S



# MARXER INFORMATIQUE

10, Rue d'Otterswiller 67700 Saverne - France  
Tél : +33 (0) 3 88 02 85 85 - Fax : +33 (0) 3 88 02 08 85

[www.marxerinfo.com](http://www.marxerinfo.com)

## Operating system

Windows CE 5.

## Terminal emulation

### TermPro emulation suite :

- \* TN5250 (Displays: 3477FC, 3477FG, 3180-2, 3179-2, 3196-A1, 5292-2, 5291-1, 5251-11; printer : 3812-1).
- \* TN3270 (Displays: 3278-2E, 3E, 4E, 5E; printer : 3487-1).
- \* ASCII (IBM 3151-31, VT100, VT220, VT320, VT420, ANSI-BBS, SCO-ANSI, Wyse 50, Wyse 60).
- \* Hot keys, full screen, keyboard remapping.
- \* OmniKey, IBM compatible 122-keys keyboard support.

## Windows terminal/VDI

Compatible with Microsoft Windows Server 2003, Windows 2000 TSE Server, Microsoft 2000 Advanced Server, Windows NT/TSE.

Compatible with Citrix MetaFrame, MetaFrame XP, MetaFrame pour UNIX, Presentation Server, Citrix Application Delivery Infrastructure, Access Suite.

### Citrix ICA Version 9.x protocol.

- \* Network or modem connection to the Citrix server.
- \* Auto login.
- \* Auto detection and configuration of printers connected to OmniTerm/W180.
- \* Network printing.
- \* Audio support.
- \* Wheel mouse support.
- \* SpeedScreen3.
- \* Ports mapping.
- \* High Color support.
- \* Citrix Nfuse.
- \* PNAgent.

### Microsoft RDP version 5.5 protocol.

- \* Auto login.
- \* Automatic detection and configuration of connected printers.
- \* Audio support.
- \* Ports mapping.
- \* High color.

### VDI Access.

- \* Built-in Remote Desktop broker from Provision Networks.
- \* Dunes broker compatible.

## Internet

### Internet Explorer 6 for Windows CE browser.

- \* Bookmarks.
- \* Local print screen.
- \* HTTPS support. 128 bits encryption. SSL (Versions 1, 2 et 3) and TLS Support.
- \* Cookies blocker.
- \* "Dynamic HTML" and CSS format support.
- \* Microsoft Jscript 5.5, Microsoft VBScript 5.5 and Microsoft Visual Basic Scripting Edition support.
- \* JPEG, GIF and XMB formats support.
- \* Windows Media Player.
- \* Proxy connection support.
- \* Popup blocker.
- \* Full screen kiosk mode.

## Built-in productivity add-ons

### LPD print server.

- \* AS/400, Mainframes, HP9000, hosts UNIX, PC under Windows NT, 2000, XP, Linux can send their printouts to the OmniTerm/W180 attached printer using the LPR/LPD protocol.

### Netcom Serial Proxy :

- \* Let an application take control of OmniTerms/W180 serial ports.

### Netclock Time client :

- \* Automatic or manual date and time synchronization with time servers.

### ThinPrint client :

- \* Driver free printing solution reducing the bandwidth allocated to the print jobs giving priority to the application (requires Thin Print on server).

### VNC server :

- \* Authorizes shadowing of OmniTerm/W180 from a VNC equipped PC.

### Integrated drivers :

- \* Driver for 3M Touch Systems ELO and E-Galax touch screens.
- \* Driver for Magtek magnetic stripe reader.
- \* PC/SM format smart card reader driver (OmniTerm/W180S).
- \* Built-in driver for the OmniLink 802.11/bg WiFi USB adapter.

## Remote management and configuration services

ORCA, remote management and configuration software.

- \* Save individual configurations.
- \* Modify configurations.
- \* Manage groups.
- \* Force units to reboot.
- \* Shut down on LAN.
- \* Snippets and add-on manager.
- \* Send message to user or groups of users.
- \* Automatically maintain an assets management database.
- \* Total remote control of units on the network.
- \* May run as a Windows service
- \* Upgrade microcodes.
- \* Copy configurations.
- \* Explore sub networks.
- \* Reset units to factory defaults.
- \* Wake up units on LAN.
- \* Task scheduler.

Capability to use DHCP to configure :

- \* Default RDP and/or ICA sessions.
- \* Terminal name.
- \* Language
- \* Time zone.

Automatic microcode upgrade and/or configuration at boot time via FTP.  
Recovery of failed flash upgrades with the unique eBoot recovery protocol.

## Hardware

Processor: AMD LX 800.  
SDRAM DDR Memory: 128 MB, maximum 1 GB.  
Flash memory: 32 MB Disk On Module (DOM).  
Parallel port: one DB25 Centronics compatible connector.  
Serial ports: two DB9 connectors up to 115 200 bauds.  
Keyboard port: one PS2 connector.  
Mouse port: one PS2 port.  
USB ports : four ports with two at the front (OmniTerm/W180).  
three ports with one at the front (OmniTerm/W180S).  
Ethernet port: 10/100 Mbps.  
Smart card: one integrated PC/SC compatible USB reader (OmniTerm/W180S).

## Multimedia

Maximum resolutions: 1920 x 1200 (16/10 monitor)  
1280x 720 (16/9 monitor)  
1600 x 1200 (4/3 monitor)  
8 Bpp/16 Bpp/32 Bpp.  
(256 Colors/Hi-Color/True Color).

Video refresh rate : up to 100Hz.  
Audio output : 16 bits 48 kHz stereo out, FM synthesis.  
Microphone input : 8 bits.  
Audio jacks: Line-in, microphone-in.



## Physical specifications

Rugged double casing (metal and plastic).  
Compatible with the 100x100 mm VESA FDMI standard (mounting kit included).  
External power supply.  
Dimensions (H x W x D): 4,5 x 19,5 x 13 cm.  
Weight : 660 g.

## Environment

Temperature :  
\* Operations: 5°C to 40°C  
\* Storage: -40°C to 60°C.  
Relative humidity (non condensing):  
\* Operations: 20% to 80%  
\* Storage: 5% to 90%.  
Noise level: 0 dB.

## Power requirements

Input voltage : 100 to 240 VAC, 50 /60Hz, 0,8 A, auto sensing.  
Output voltage: 5 V DC, 4 A. Consumption: 4,8 W – 2,4 W stand by.

## Certifications



## Accessories

17" LCD monitors.  
105-key PC keyboard or Nlynx OmniKey Multi Host 122-key keyboard.  
PS/PC compatible smart card reader.  
OmniLink , external USB WiFi 802.11b/g adapter.  
VESA 100mm/75mm adapter.

## Warranty

Three years, advanced replacement.

## Distributed by :

# MARXER INFORMATIQUE

10, Rue d'Otterswiller 67700 Saverne – France  
Tél : +33 (0) 3 88 02 85 85 - Fax : +33 (0) 3 88 02 08 85

[www.marxerinfo.com](http://www.marxerinfo.com)

[contact@marxerinfo.com](mailto:contact@marxerinfo.com)

